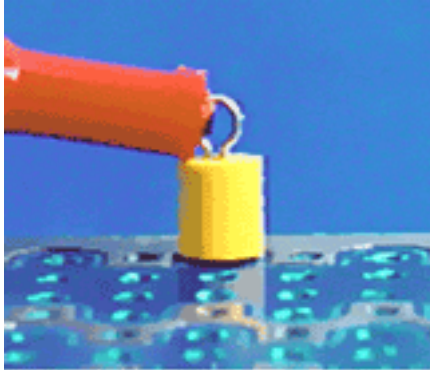


TP-105 Series Color Coded Printed Circuit Test Points

Color Coded Printed Circuit Test Points



Specifications

Materials:

Contact Material: .010" x .020" Phosphor Bronze #510 Alloy

Finish: .0001 Matte Tin over .00005 Nickel

Collar: 15% Glass Filled Polyester

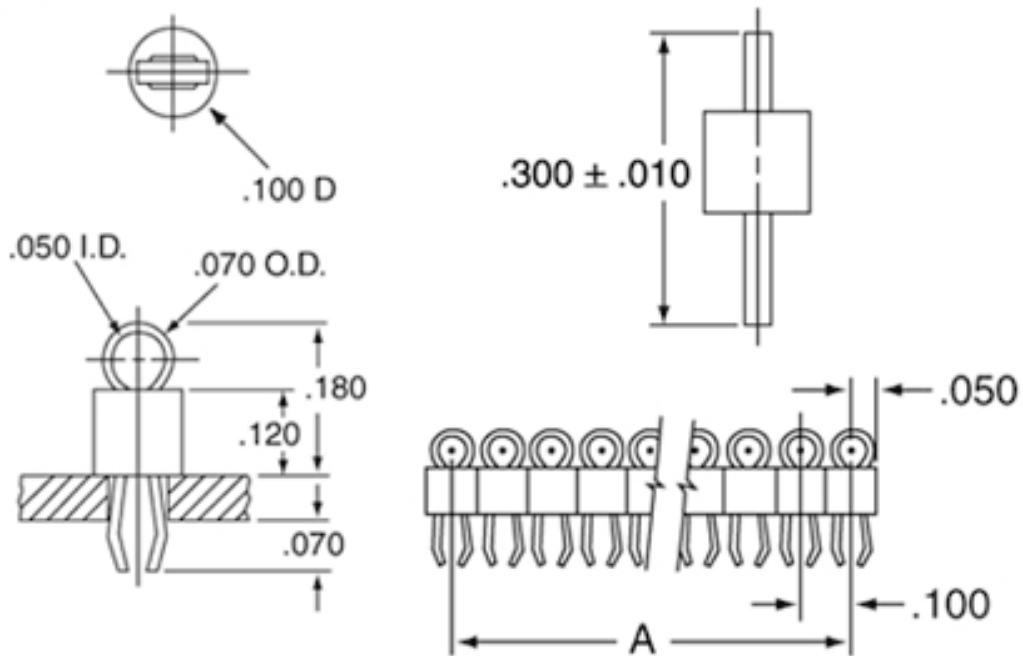
Electrical:

Mounting Holes: .035" to .042" diameter hole

Special Notations:

The specifically designed hand tool, part number 1050, speeds cutting, gripping and insertion of TP-105 test points.

TP-105 Contacts



TP-105 Dimension Chart

| Part Number | Dimension A | Part Number | Dimension A |
|-------------|-------------|-------------|-------------|
| TP-105-01 | NA | TP-105-21 | 2.000 |
| TP-105-02 | .100 | TP-105-22 | 2.100 |
| TP-105-03 | .200 | TP-105-23 | 2.200 |
| TP-105-04 | .300 | TP-105-24 | 2.300 |
| TP-105-05 | .400 | TP-105-25 | 2.400 |
| TP-105-06 | .500 | TP-105-26 | 2.500 |
| TP-105-07 | .600 | TP-105-27 | 2.600 |
| TP-105-08 | .700 | TP-105-28 | 2.700 |
| TP-105-09 | .800 | TP-105-29 | 2.800 |
| TP-105-10 | .900 | TP-105-30 | 2.900 |
| TP-105-11 | 1.000 | TP-105-31 | 3.000 |
| TP-105-12 | 1.100 | TP-105-32 | 3.100 |
| TP-105-13 | 1.200 | TP-105-33 | 3.200 |
| TP-105-14 | 1.300 | TP-105-34 | 3.300 |
| TP-105-15 | 1.400 | TP-105-35 | 3.400 |
| TP-105-16 | 1.500 | TP-105-36 | 3.500 |
| TP-105-17 | 1.600 | TP-105-37 | 3.600 |
| TP-105-18 | 1.700 | TP-105-38 | 3.700 |
| TP-105-19 | 1.800 | TP-105-39 | 3.800 |
| TP-105-20 | 1.900 | TP-105-40 | 3.900 |

Ordering Information

Example:

TP-105 - 40 - 02

● **Series Designation:**
TP-105

● **Number of Positions:**
01 through 40

● **Color:**

| | |
|-------------|-------------|
| 00 = Black | 05 = Green |
| 01 = Brown | 06 = Blue |
| 02 = Red | 07 = Purple |
| 03 = Orange | 08 = Gray |
| 04 = Yellow | 09 = White |

Product Description

The TP-105 series test point offers a functionally superior alternative to other means of board level trouble shooting, particularly .025" square header posts. While featuring a loop profile for positive test probe retention, this product is available in any combination of positions, from one to forty, at .100" centers and fits in the popular .035" diameter hole size. The above board profile is substantially below that of headers and other devices used as test points. Thus, a re-fit can be accomplished without any printed circuit board layout re-design costs, while significantly reducing test point height and improving function.

Visibility and identification are significantly enhanced by the choice of ten standard colors for the TP-105 series, representing all of the variations of the industry color code. The TP-105 may be purchased pre-cut to any specified number of positions from one to forty. Mounting leg design insures positive retention in the circuit board during soldering operations.

Certificate of Compliance with Directive 2002/95/EC RoHS and REACH Regulations EC 1907/2006

This is to certify that Components Corporation designs, manufactures and supplies products to our customers that are in compliance with RoHS Directive 2002/95/EC and REACH Regulations EC 1907/2006. This also pertains to procurement of raw material, component parts and processes.