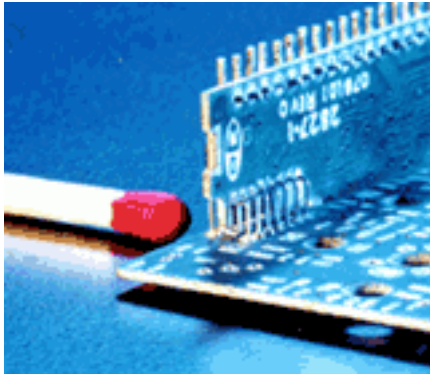


DIGI-KLIP SMP/SMA Series Micro-Miniature

Micro-Miniature, Single Row, Free-Standing Card Edge Contacts



Specifications

- **SMP050/SMA050:** .050" centerline spacing, maximum of 50 contacts per carrier strip
- **SMP100/SMA100:** .100" centerline spacing, maximum of 25 contacts per carrier strip

Materials:

Contact Material: #172 alloy .012" diameter beryllium copper wire, heat treated after forming

Mechanical:

Module Board Thickness: SMP = .031" +/- .004" SMA = .062" +/- .005"

Carrier Strip Material: 30% glass filled polyester thermoplastic, disposable, available to cut to length from four contacts to maximum available for series selected

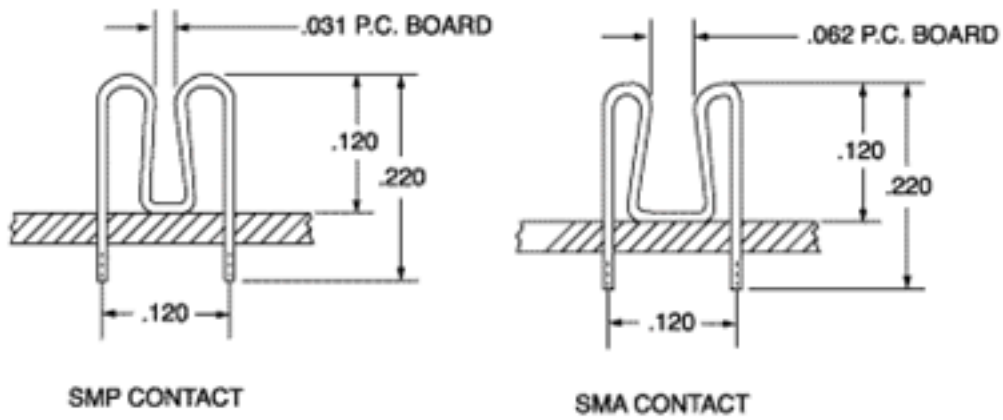
Mounting Holes: .018" diameter

Electrical:

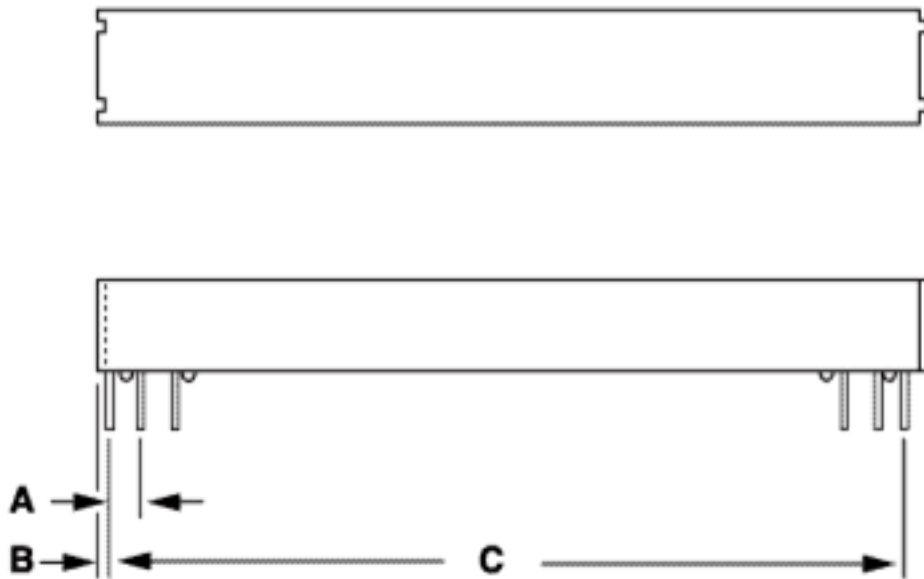
Contact resistance: Less than .005 ohm per contact

Maximum Current: 1.0 ampere per contact

SMP/SMA Contacts



SMP/SMA Carrier Strip



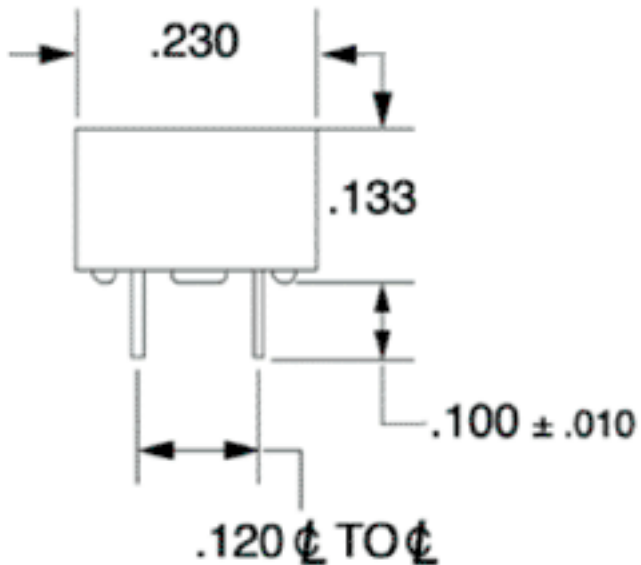
Series	A	B Maximum	C Contact Pairs
SMP050	.050	.025	4 thru 50
SMP100	.100	.050	4 thru 25
SMA050	.050	.025	4 thru 50
SMA100	.100	.050	4 thru 25

SMP/SMA Board Layout



Series	Dim. A
SMP050	.050
SMP100	.100
SMA050	.050
SMA100	.100

SMP/SMA Accessories



Ordering Information

Example:

SMP100 - 4 - 1 - (XX)

● **Series Designation:**
SMP = .031" Printed Circuit Board
SMA = .062" Printed Circuit Board

● **Contact Spacing:**
050 = .050"
100 = .100"

● **Contacts:**
SMP050 = 4 thru 50 Contacts
SMA050 = 4 thru 50 Contacts
SMP100 = 4 thru 25 Contacts
SMA100 = 4 thru 25 Contacts

● **Contact Plating Code:**
1 = .0001" Electro Tin over Copper
2 = .00003 Gold over Nickel*
3 = .00005" Gold over Nickel*

● **Custom Design (Optional):**
Assigned by factory for special configuration.

*All gold finishes per
MIL-G-45204

Product Description

The DIGI-KLIP® SMP/SMA Series, micro-miniature free-standing card edge interconnect system provides the lowest profile and highest density available for the card edge interconnect of two printed circuit boards.

The unique wireform contacts are manufactured from annealed beryllium copper alloy and heat treated after forming for spring temper. The proprietary concept produces free-standing card edge contacts which exhibit superior stress relaxation characteristics, a "wiping action" "gas tight" junction and low contact resistance.

Whether the SMP series (for .031" mating board) or the SMA Series (for .062" mating board) is selected, significant space savings may be achieved. Both contact styles have an above board height of .120" and require mounting holes of only .120" centers.

Choice of adjacent contact spacing is .050" for the SMP050 or SMA050 and .100" for the SMP100 and SMA100 Series. Any combination of single row contacts may be provided from 4 through 50 (SMP050/SMA050) or 4 through 25

(SMP100/SMA100), on convenient, disposable carrier strips.

Although designed for single row application, the contact geometry of the SMP/SMA Series provides dual path potential for further contact integrity.

Certificate of Compliance with Directive 2002/95/EC RoHS and REACH Regulations EC 1907/2006

This is to certify that Components Corporation designs, manufactures and supplies products to our customers that are in compliance with RoHS Directive 2002/95/EC and REACH Regulations EC 1907/2006. This also pertains to procurement of raw material, component parts and processes.