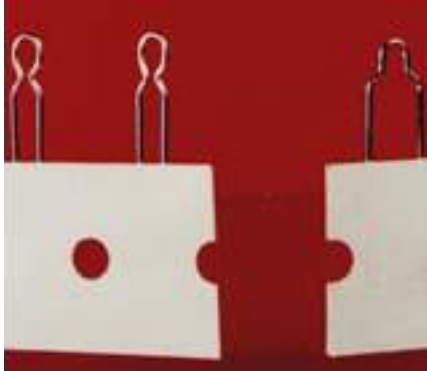


# ATP-402 Series Auto Insertable Tape and Reel Test Points

Auto Insertable, Tape & Reel Test Points



## Specifications

### Materials:

**Contact Material:** .020" diameter copper wire (24 AWG)

**Finish:** Bright, electro-tin

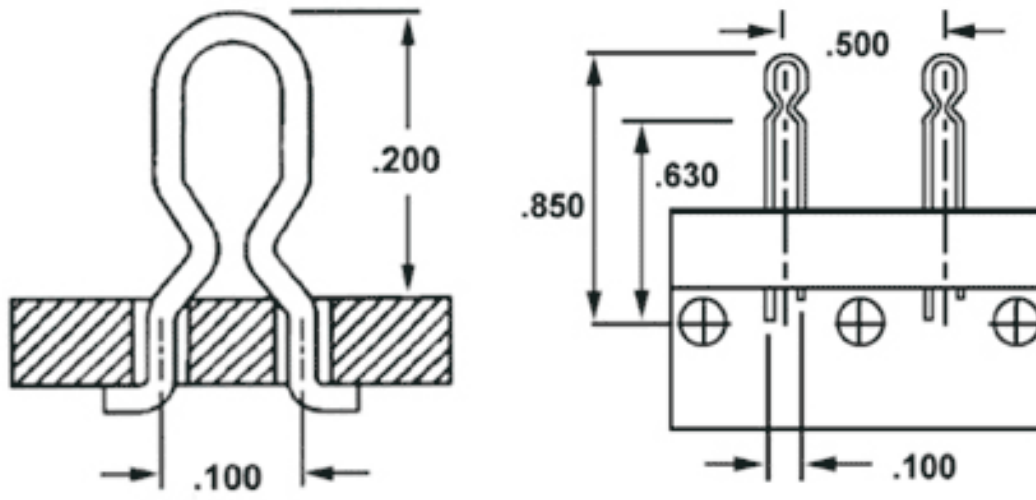
**Mounting Holes:** .035" to .040" diameter, plated through

### Special Notions:

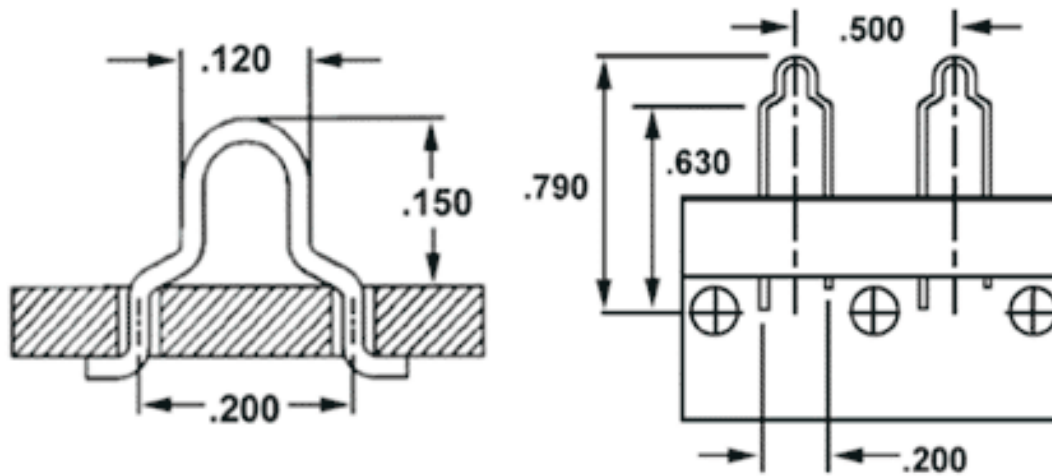
**Standard Pack:** 5000 pieces per reel

**Taping Standard:** Universal Instruments Specification #GS-187E

## ATP-402-10 Contacts



## ATP-402-20 Contacts



## Ordering Information

### Example:

**ATP-402 - 10**

● **Series Designation:**  
ATP-402

● **Lead Spacing:**  
10 = .100"  
20 = .200"

## Product Description

ATP-402 series test points provide a convenient loop profiled anchor for the board level "troubleshooting" of today's densely populated electronic circuits in a configuration which is fully compatible with automated, mass assembly processes. These units are supplied on a tape-and-reel format which conforms to most radial leaded, component insertion machines and complies with the taping specifications of Universal Instruments Corporation.

Within the ATP-402 series there are two choices of test point. The ATP-402-10 provides an oval configured loop and has mounting leads on .100" centers. The ATP-402-20 is a lower profiled device with an "above board" height of .150" and mounting leads on .200" centers. Both of these units are formed from .020" diameter copper wire, have an electro tin finish and are packaged on standard reels of 5000.

### **Certificate of Compliance with Directive 2002/95/EC RoHS and REACH Regulations EC 1907/2006**

This is to certify that Components Corporation designs, manufactures and supplies products to our customers that are in compliance with RoHS Directive 2002/95/EC and REACH Regulations EC 1907/2006. This also pertains to procurement of raw material, component parts and processes.