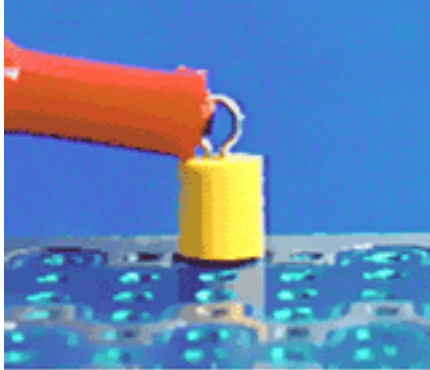


# TP-105 Series Color Coded Printed Circuit Test Points

Color Coded Printed Circuit Test Points



## Specifications

### Materials:

**Contact Material:** .010" x .020" Phosphor Bronze #510 Alloy

**Finish:** .0001 Matte Tin over .00005 Nickel

**Collar:** 15% Glass Filled Polyester

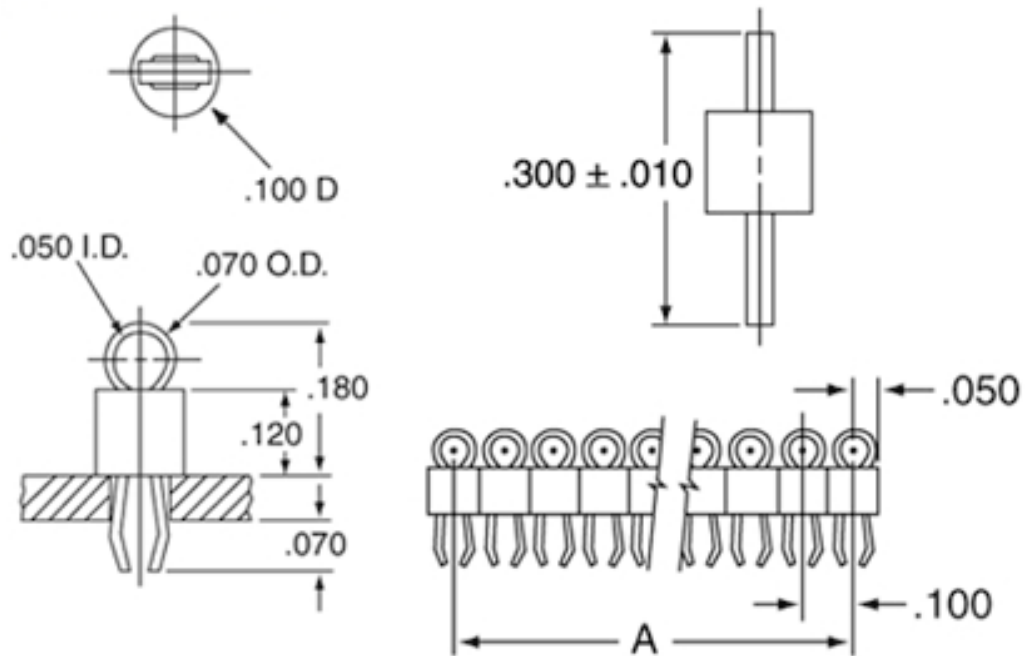
### Electrical:

**Mounting Holes:** .035" to .042" diameter hole

### Special Notations:

The specifically designed hand tool, part number 1050, speeds cutting, gripping and insertion of TP-105 test points.

## TP-105 Contacts



## TP-105 Dimension Chart

Part Number	Dimension A	Part Number	Dimension A
TP-105-01	NA	TP-105-21	2.000
TP-105-02	.100	TP-105-22	2.100
TP-105-03	.200	TP-105-23	2.200
TP-105-04	.300	TP-105-24	2.300
TP-105-05	.400	TP-105-25	2.400
TP-105-06	.500	TP-105-26	2.500
TP-105-07	.600	TP-105-27	2.600
TP-105-08	.700	TP-105-28	2.700
TP-105-09	.800	TP-105-29	2.800
TP-105-10	.900	TP-105-30	2.900
TP-105-11	1.000	TP-105-31	3.000
TP-105-12	1.100	TP-105-32	3.100
TP-105-13	1.200	TP-105-33	3.200
TP-105-14	1.300	TP-105-34	3.300
TP-105-15	1.400	TP-105-35	3.400
TP-105-16	1.500	TP-105-36	3.500
TP-105-17	1.600	TP-105-37	3.600
TP-105-18	1.700	TP-105-38	3.700
TP-105-19	1.800	TP-105-39	3.800
TP-105-20	1.900	TP-105-40	3.900

## Ordering Information

### Example:

**TP-105 - 40 - 02**

● **Series Designation:**  
TP-105

● **Number of Positions:**  
01 through 40

● **Color:**

00 = Black	05 = Green
01 = Brown	06 = Blue
02 = Red	<del>07 = Purple</del>
03 = Orange	08 = Gray
04 = Yellow	09 = White

## Product Description

The TP-105 series test point offers a functionally superior alternative to other means of board level trouble shooting, particularly .025" square header posts. While featuring a loop profile for positive test probe retention, this product is available in any combination of positions, from one to forty, at .100" centers and fits in the popular .035" diameter hole size. The above board profile is substantially below that of headers and other devices used as test points. Thus, a re-fit can be accomplished without any printed circuit board layout re-design costs, while significantly reducing test point height and improving function.

Visibility and identification are significantly enhanced by the choice of ten standard colors for the TP-105 series, representing all of the variations of the industry color code. The TP-105 may be purchased pre-cut to any specified number of positions from one to forty. Mounting leg design insures positive retention in the circuit board during soldering operations.

## Certificate of Compliance with Directive 2011/65/EU RoHS and EU Regulation EC 1907/2006

This is to certify that Components Corporation designs, manufactures and supplies products to our customers that are in compliance with Directive 2011/65/EU RoHS and EU Regulation EC 1907/2006, 84 SVH. This also pertains to procurement of raw material, component parts and processes.